



Saudi Water Authority FACADE LIGHTING DESIGN

JELLYFISH ARCHITECTURAL LIGHTING



Welcome

The Saudi Water Authority Façade Lighting Design project celebrates a harmony between functionality, architectural rhythm, and visual identity. The lighting concept aims to emphasize the building's strong geometric lines while highlighting its architectural layers through a refined balance of light and shadow.

Dynamic lighting is introduced to symbolize sustainability and vitality — with the signature green tone representing growth, renewal, and the authority's connection to the environment.

The design transitions smoothly between elegant warm white architectural lighting for everyday use and vibrant dynamic scenes for national occasions, creating a modern and cohesive visual statement that reinforces the building's civic prominence within its urban context.

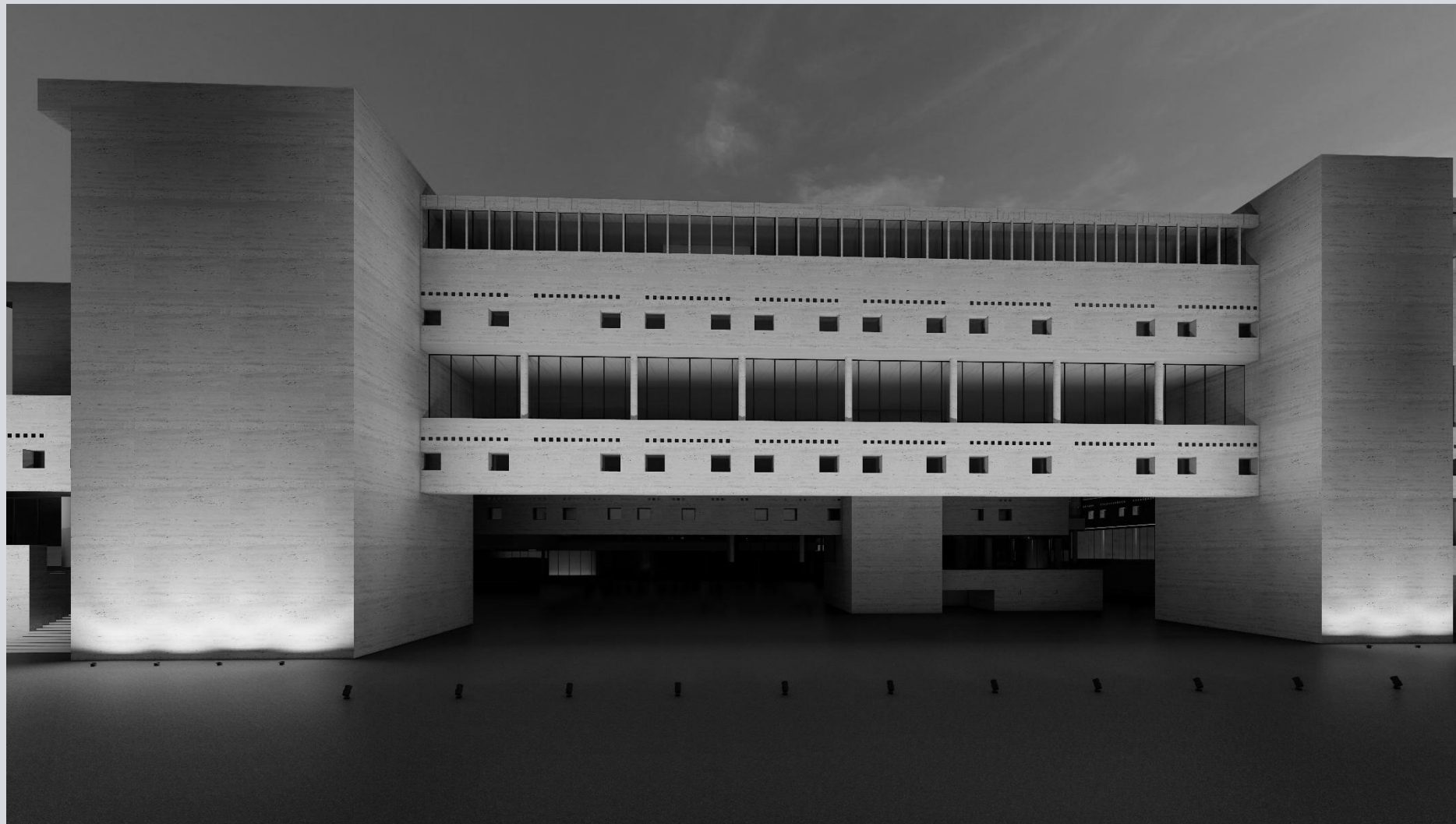


[About](#)[Concept](#)[Design](#)[Lux study](#)[Selection](#)

Indirect projectors discreetly embedded in the ground illuminate the building with refined precision. Their carefully angled beams wash the façade surfaces, enhancing the architectural form without revealing the light source. This indirect approach preserves visual comfort while lending the structure a soft, ambient glow that defines its silhouette against the night sky. The result is a balanced interplay between brightness and shadow, ensuring the building maintains its elegance and prominence after dark.



Narrow-beam projectors uplights mounted on the façade deliver precise accents that emphasize the building's architectural rhythm. Their controlled optics create crisp highlights that define structural edges and vertical elements, enhancing the perception of depth and proportion. The focused beams add contrast and drama without overwhelming the composition, ensuring a visually striking yet balanced façade. This deliberate use of light reinforces the building's identity and draws attention to its distinctive geometry after dark.

[About](#)[Concept](#)[Design](#)[Lux study](#)[Selection](#)

The façade is defined by its strong horizontal slabs and deep vertical reveals, is illuminated through precisely aimed uplights that accentuate its volumetric geometry. Soft wall grazing highlights the texture of the façade surfaces, subtly revealing depth and craftsmanship. This controlled use of light and shadow gives the architecture a sculptural quality, ensuring that even after dark, the building retains its visual rhythm and integrity.

[About](#)[Concept](#)[Design](#)[Lux study](#)[Selection](#)

The entrance is defined by a balanced composition of downlights and wall grazers that guide visitors while emphasizing architectural detail. Precisely recessed downlights provide focused illumination on the circulation paths, ensuring visual comfort and clarity. Vertical grazers accentuate the texture and materiality of the entrance walls, creating a welcoming play of light and shadow. Together, these layers of light enhance spatial depth and direct attention to the main threshold, establishing a sense of arrival that is both functional and visually refined.



[About](#)

[Concept](#)

[Design](#)

[Lux study](#)

[Selection](#)



JELLYFISH ARCHITECTURAL LIGHTING



[About](#)

[Concept](#)

[Design](#)

[Lux study](#)

[Selection](#)

JELLYFISH ARCHITECTURAL LIGHTING



[About](#)

[Concept](#)

[Design](#)

[Lux study](#)

[Selection](#)



JELLYFISH ARCHITECTURAL LIGHTING



About

Concept

Design

Lux study

Selection



JELLYFISH ARCHITECTURAL LIGHTING



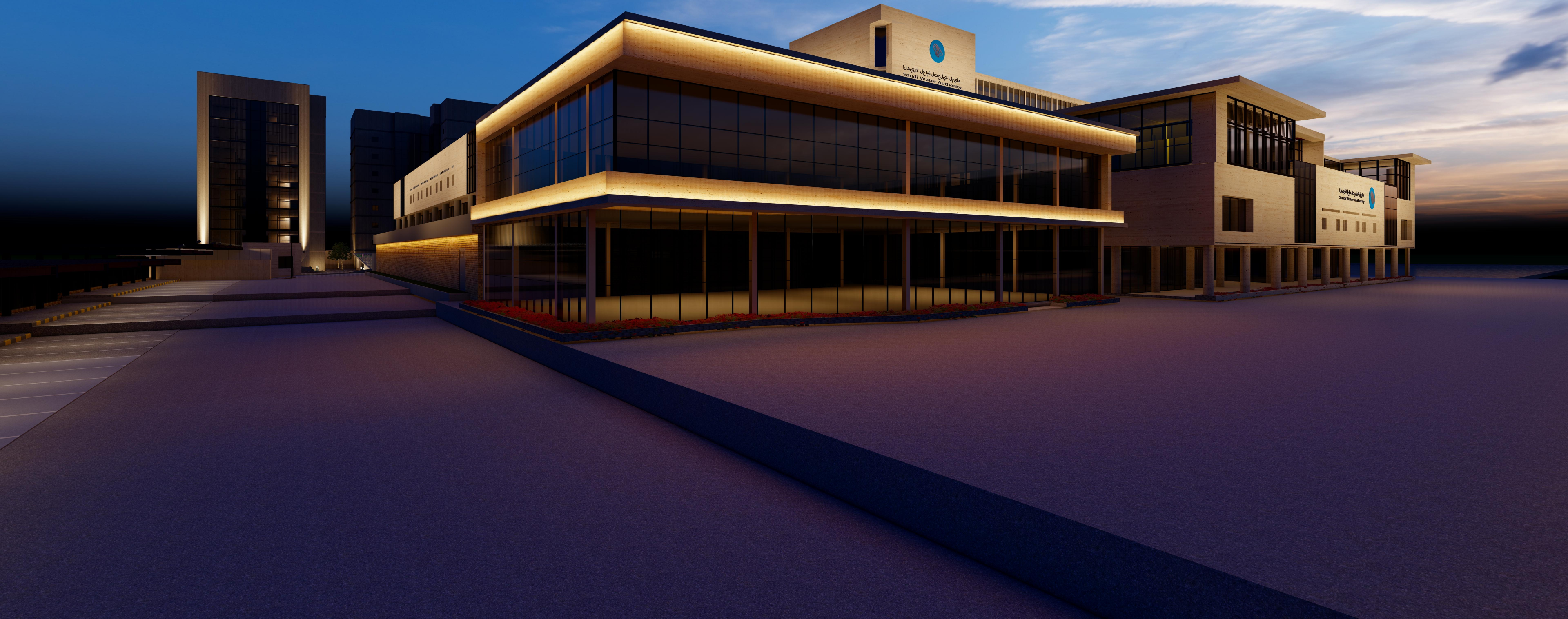
[About](#)

[Concept](#)

[Design](#)

[Lux study](#)

[Selection](#)



JELLYFISH ARCHITECTURAL LIGHTING



About

Concept

Design

Lux study

Selection



هايمالاية لحتل ةم اعلا ةئهل
Saudi Water Authority

JELLYFISH ARCHITECTURAL LIGHTING



[About](#) [Concept](#) [Design](#) [Lux study](#) [Selection](#)



JELLYFISH ARCHITECTURAL LIGHTING



[About](#) [Concept](#) [Design](#) [Lux study](#) [Selection](#)



JELLYFISH ARCHITECTURAL LIGHTING



[About](#)

[Concept](#)

[Design](#)

[Lux study](#)

[Selection](#)



JELLYFISH ARCHITECTURAL LIGHTING



[About](#)

[Concept](#)

[Design](#)

[Lux study](#)

[Selection](#)



JELLYFISH ARCHITECTURAL LIGHTING



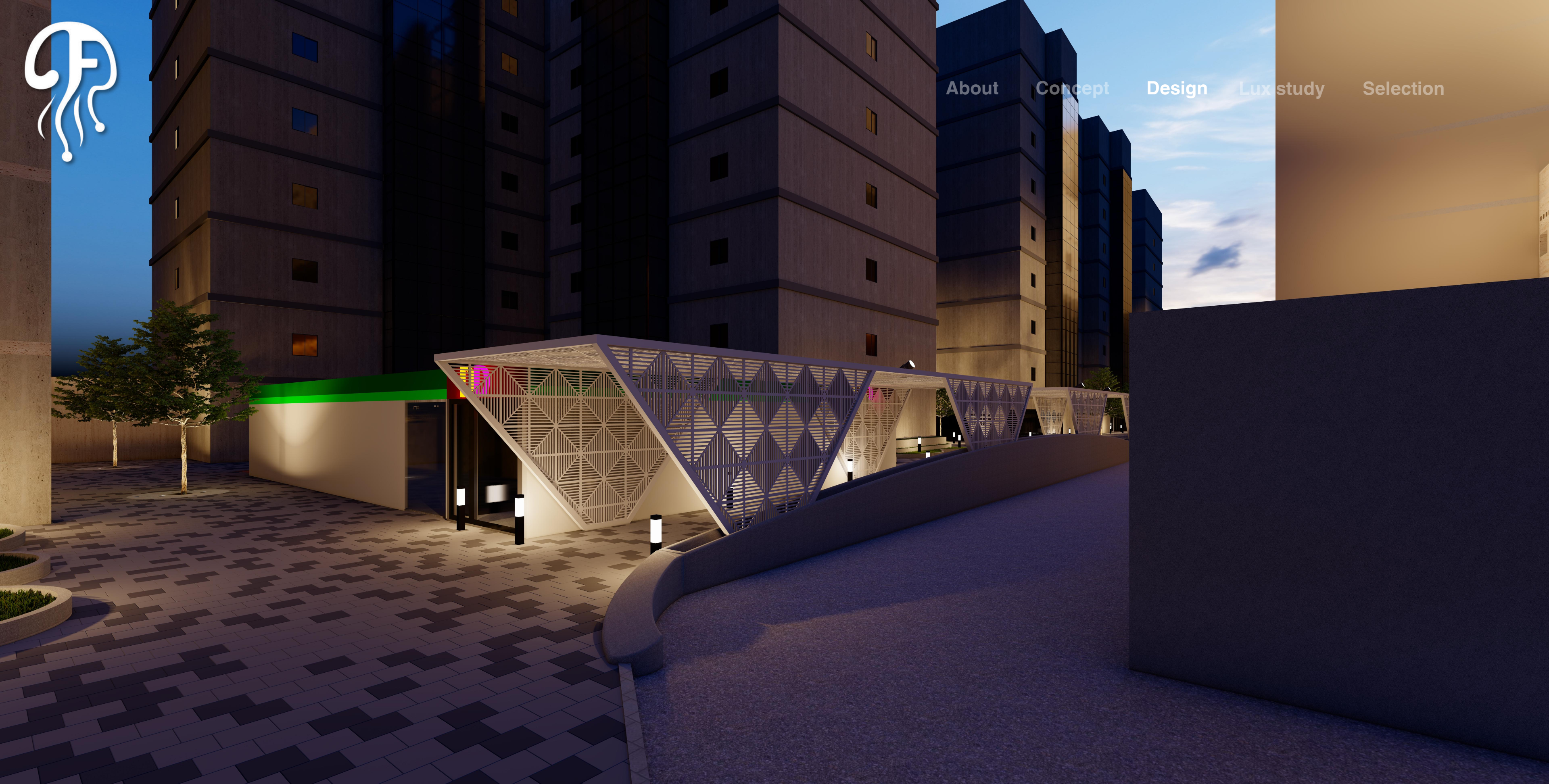
About

Concept

Design

Lux study

Selection





[About](#)

[Concept](#)

[Design](#)

[Lux study](#)

[Selection](#)

DD

JELLYFISH ARCHITECTURAL LIGHTING



[About](#)

[Concept](#)

[Design](#)

[Lux study](#)

[Selection](#)



JELLYFISH ARCHITECTURAL LIGHTING



About

Design

Lux study

Selection

JELLYFISH ARCHITECTURAL LIGHTING



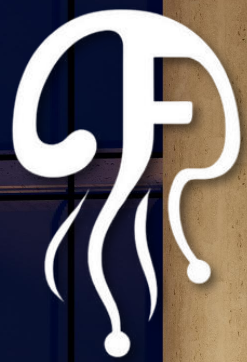
[About](#)

[Concept](#)

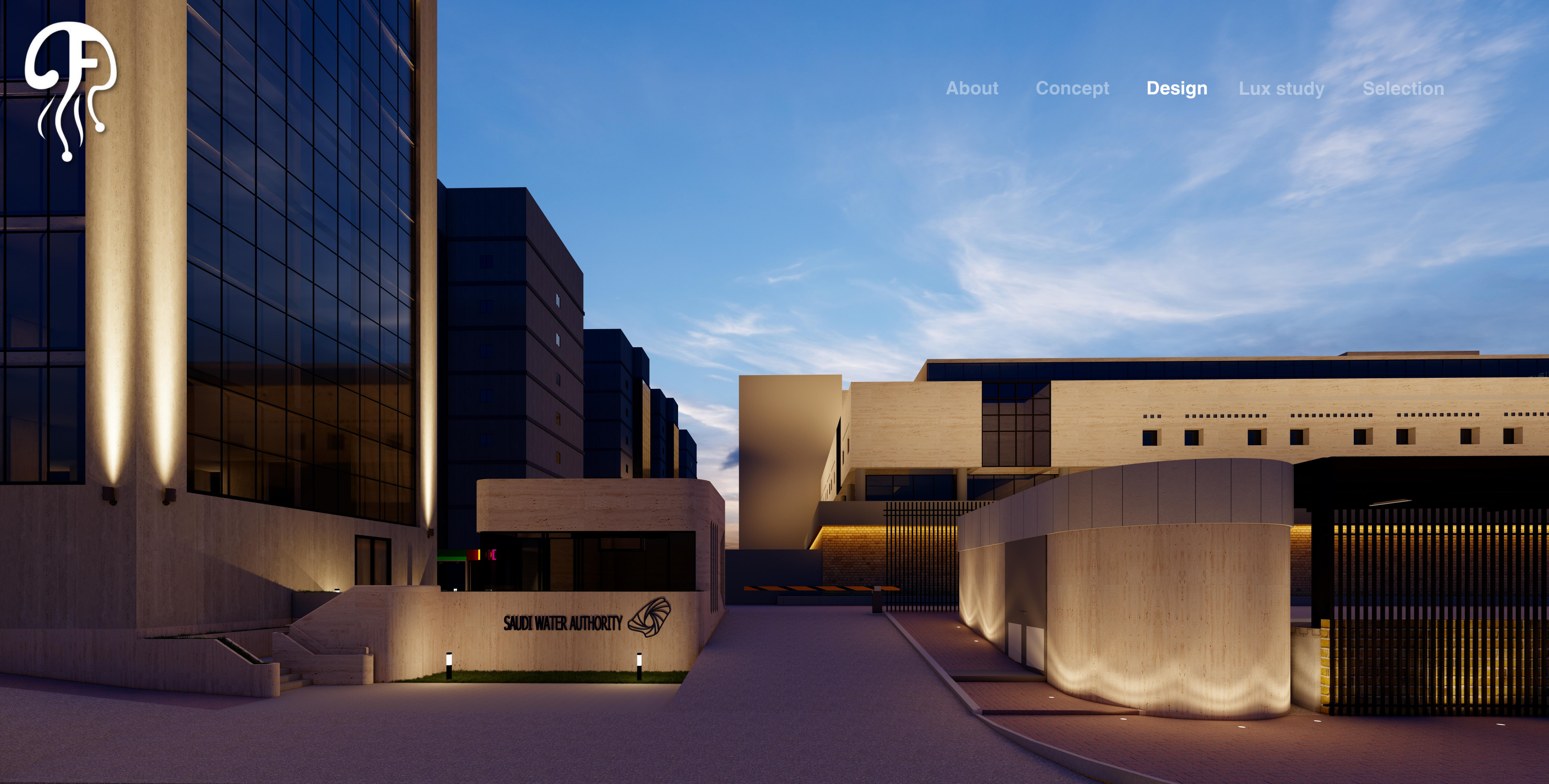
[Design](#)

[Lux study](#)

[Selection](#)



[About](#) [Concept](#) [Design](#) [Lux study](#) [Selection](#)



SAUDI WATER AUTHORITY 

JELLYFISH ARCHITECTURAL LIGHTING



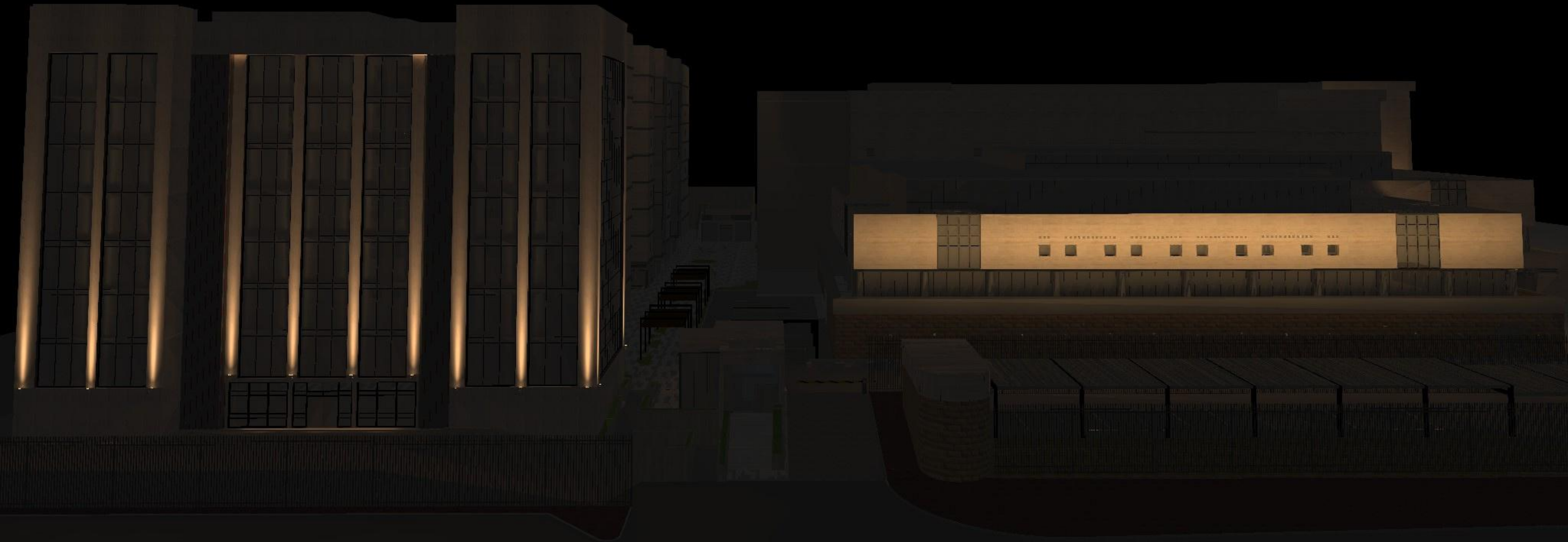
[About](#)

[Concept](#)

[Design](#)

[Lux study](#)

[Selection](#)



JELLYFISH ARCHITECTURAL LIGHTING



[About](#)

[Concept](#)

[Design](#)

[Lux study](#)

[Selection](#)

JELLYFISH ARCHITECTURAL LIGHTING



[About](#) [Concept](#) [Design](#) [Lux study](#) [Selection](#)



JELLYFISH ARCHITECTURAL LIGHTING



[About](#)

[Concept](#)

[Design](#)

[Lux study](#)

[Selection](#)



JELLYFISH ARCHITECTURAL LIGHTING



[About](#)

[Concept](#)

[Design](#)

[Lux study](#)

[Selection](#)



JELLYFISH ARCHITECTURAL LIGHTING



[About](#)

[Concept](#)

[Design](#)

[Lux study](#)

[Selection](#)

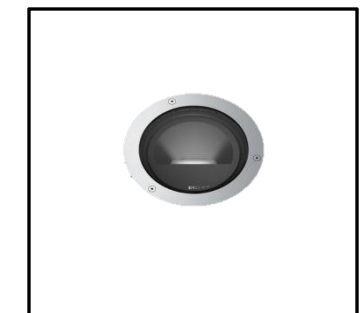


JELLYFISH ARCHITECTURAL LIGHTING



Projector

3000K
5 °
989 lm
17.2W



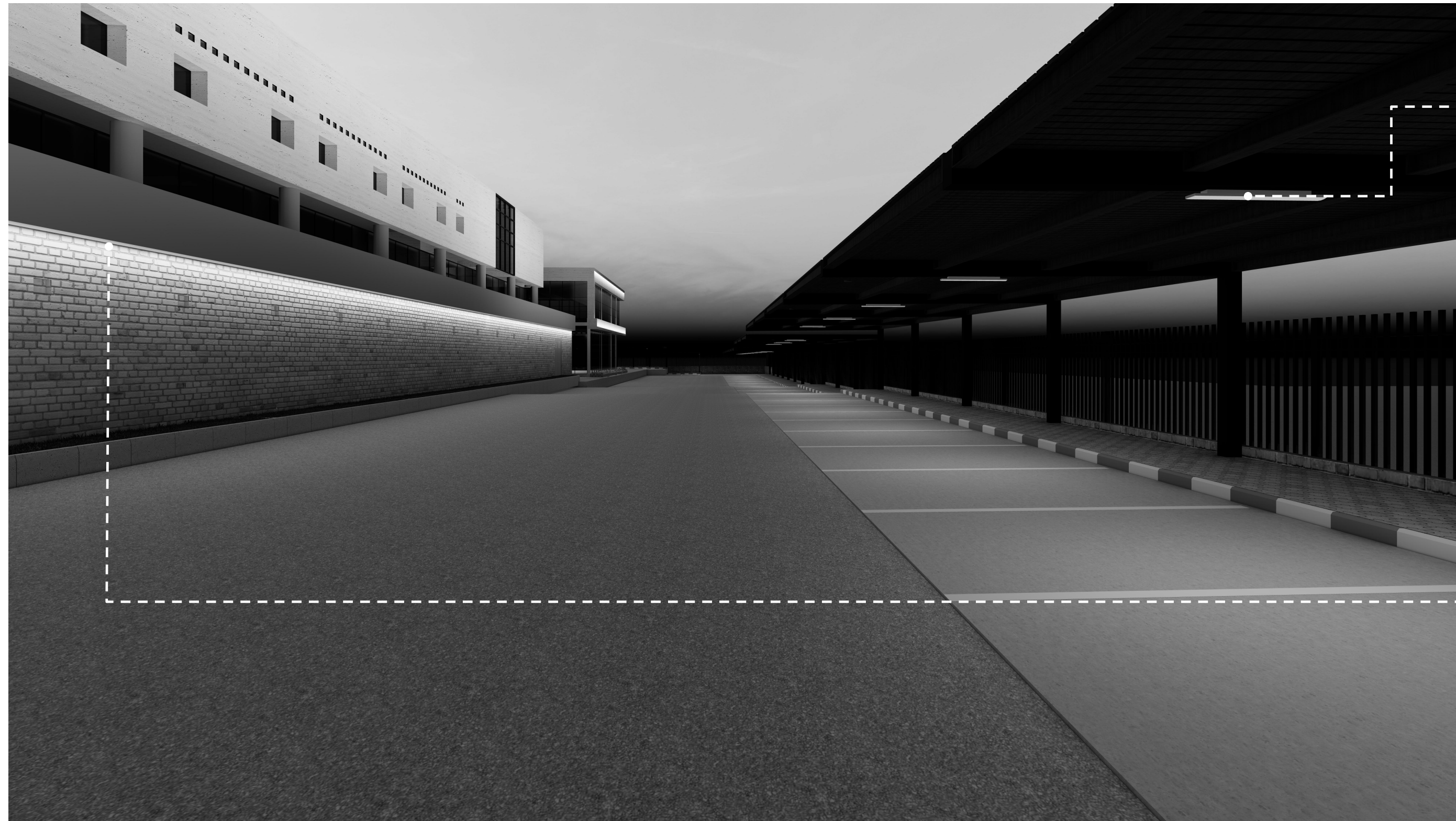
Uplight wallwasher

3000K
wallwasher
1022 lm
19 W



Projector floodlight

3000K
Oval
1735 lm
22.8 W



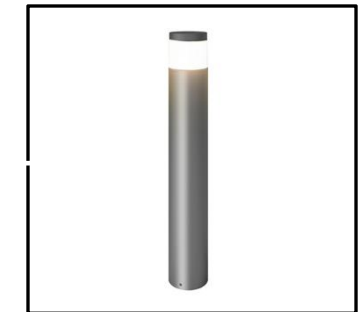
Weather proof

4000 K
5000 lm
40 W



LED Strip

3000K
IP 65
810 lm/M
9 W/M



Bollard

3000K
360 °
660 lm
13 W



Thank You

 +966 56831 3692

 [Home - Jellyfish Lighting](#)